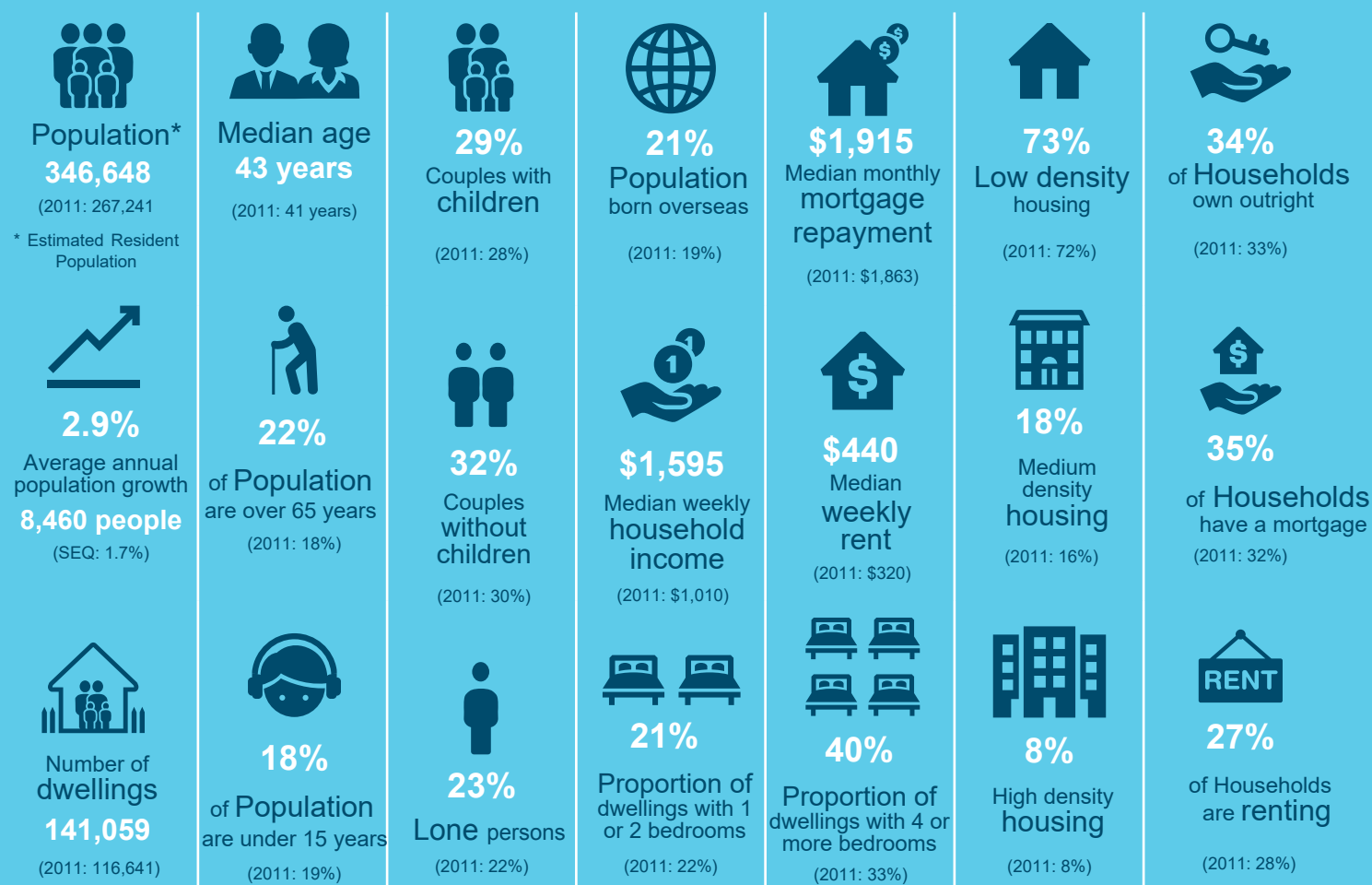


CENSUS UPDATE

SUNSHINE COAST 2021

Released 30 June 2022

Highlights and changes over the last 10 years for the Sunshine Coast Council area include:



- We are one of the fastest growing areas of Queensland, adding almost 8,000 people every year
- We continue to see high numbers of people over the age of 65 years and lower numbers of people under 25 years
- Low density dwellings (with 3+ bedrooms) remain the dominant housing type for existing and newly constructed dwellings
- Compared to 2011, households are earning \$585/week more, paying \$52/month more on mortgages and \$120/week more rent

(Source: Census of Population and Housing 2021, Australian Bureau of Statistics)

For more detailed demographic and statistical data, refer to Council's Statistics and Maps webpage via Council's website: www.sunshinecoast.qld.gov.au/Experience-Sunshine-Coast/Statistics-and-Maps

Or contact Environment and Sustainability Branch on 07 5441 8170.